

Angeleno

11TH ANNIVERSARY ISSUE

**FALL
2010!
SEXY,
CHIC,
BEAUTIFUL**

**FASHION AND
HOME SPECIAL**

The New Power Dressing
High-Rise Haute Living!
Elton John's WeHo Aerie
Get It, Got It, Goods:
Designers' Secret Sources!

+PLUS

*The McCourts Go to War
Crime Deluxe on Robertson!
A 747 House Lands in Malibu
L.A.: Vienna on the Pacific?!
& All the Sexiest Soirées*

**HIGH WATT-AGE!
NAOMI
RISING**

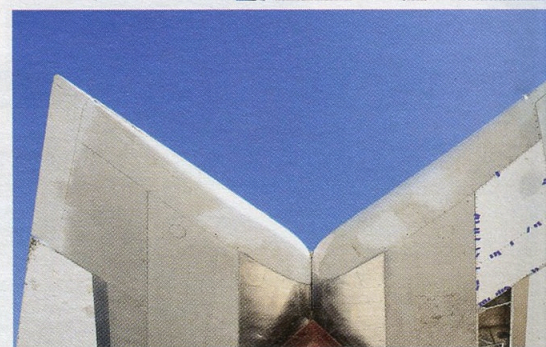
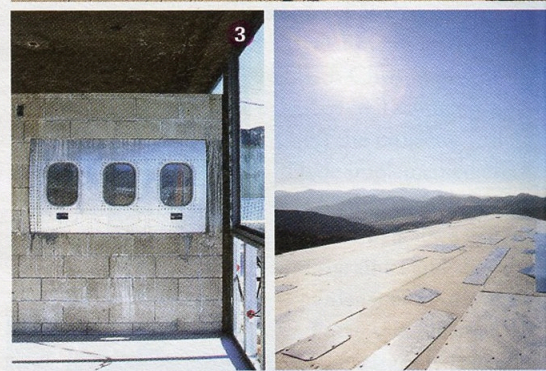
ANGELENO 5455 WILSHIRE SUITE 1412 LOS ANGELES CA 90036

MODERNLUXURY.COM



09 >

SEPTEMBER 2010



Winging It!

A deconstructed 747 touches down as a one-of-a-kind house in Malibu | *By Samantha Brooks | Photography by Spencer Lowell* |

Every day, hundreds of Boeing 747s criss-cross the continent carrying thousands of passengers. So how do you plunk one down in Malibu as a single-family home? It requires a pioneering spirit and the patience to endure piles of paperwork. “The hardest part wasn’t transporting an entire 747 from a junkyard in Victorville—it was waiting for approvals from 17 different agencies, including the FAA,” says architect David Hertz, whose Studio of Environmental Architecture is known for such high-concept eco-projects as the Floating House in Venice. His client, Francie Rehwald,

whose family owns Mercedes dealerships, wanted to maximize the mountain views from her 55-acre property (once part of the 140 acres that comprised the Tony Duquette estate). Hertz thought a flat roof wouldn’t do it. When he started sketching ideas for a curved roof, the design reminded him of airplane wings. He remembered seeing old planes in the California desert, waiting to be turned into aluminum cans, and decided to repurpose one. “We’re showing people another way to look at the materials around us,” says Rehwald. “And we’re creating a piece of architectural history.”

1. To make its trip to this Malibu site, the plane’s wings had to be separated and the fuselage was cut into 50-foot sections. All of it was trucked, with a police escort, across five closed freeways. The pieces were then airlifted by helicopter to Rehwald’s property.
2. The first stage of the project is the main house, which makes use of the wings and

the two horizontal stabilizers from the tail section.

3. Nearly every piece of the plane, including these passenger windows, was used as raw material.
4. Plans for additional structures include a guest house fashioned from the first class cabin and an art studio from the fuselage. A meditation room

made from the wings will take advantage of Rehwald’s stunning mountain views.

5. Because the 747 wings served as the home’s construction materials, the only other materials used in the home are glass, steel and concrete, which require little energy to produce.

BY THE NUMBERS **1970:** Year the Boeing 747 launched **25:** Average lifespan in years of a typical 747 **\$35,000:** Amount paid for this retired 747 **\$0:** Difference in cost between using wings as a roof vs. building a curved roof out of conventional materials **3.5:** Years it took to design, plan and build the home **6:** Number of months until the home is complete

Angeleno

INSIDE:

**REAL
ESTATE
2010!**

THE HOTTEST 'HOODS!

Trousdale Goes Hollywood

Manhattan Beach?!

South Park Gets High

What \$10 Mil Gets You Today

+PLUS

The Spec-tacular Mohamed Hadid

Mona Simpson: Nanny Diarist

Pours Galore! New Wine Bar Stars

& L.A.'s Greenest Zones

ANGELENO 5455 WILSHIRE SUITE 1412 LOS ANGELES CA 90036

MODERNLUXURY.COM



08 >

AUGUST 2010

JASON STATHAM - LIGHTS! CAMERA! ACTION HERO!



THE ARCHITECT

Carlos Zubieta*Bernstein-Zubieta Architects***Tatiana Barhar** *Verdego Design*

THE HOUSE Barhar, a retail architect in the surf industry, worked with Zubieta to create a modern beach house that opens to the garden via a 15-foot sliding door. Inside features include an open sleeping loft and 22-foot ceilings in the dining room.

THE 'HOOD PERK "We don't drive at all. We commute on bicycles or just walk!" says Barhar.



THE ARCHITECTS

Yasi Vafai &**Robert Thibodeau** *DU Architects*

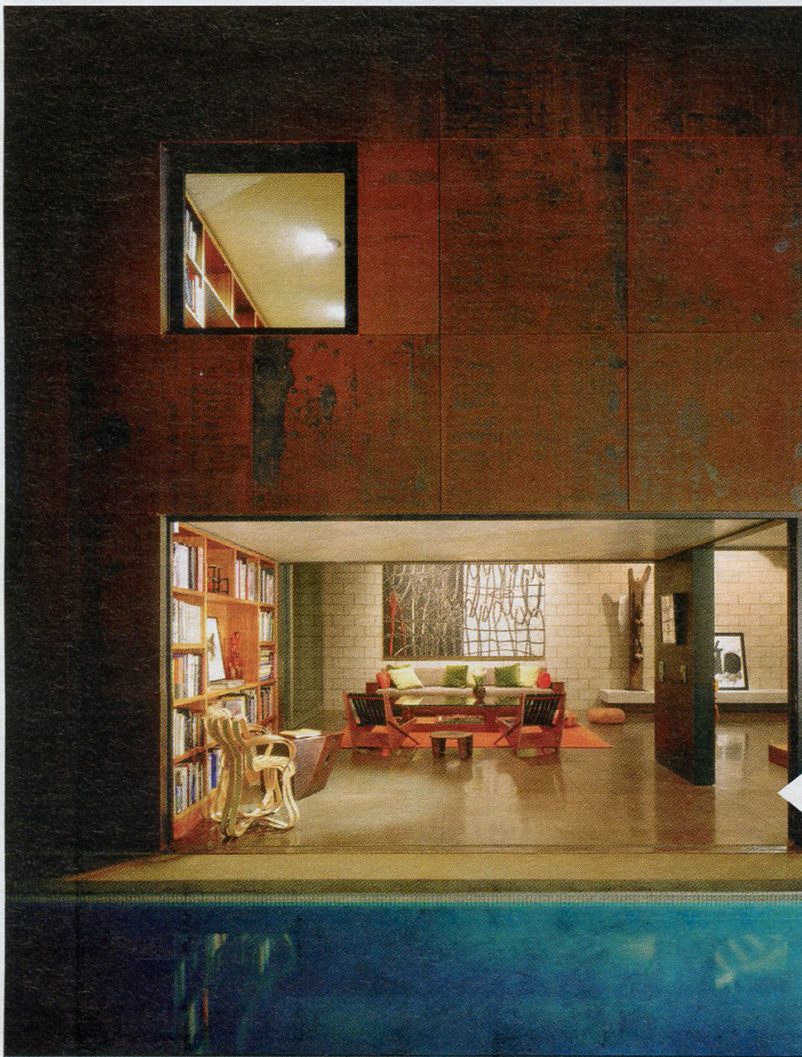
THE HOUSE The husband-and-wife design team followed the footprint of the site's original house, purposefully "under-building in an era of mansionization," says Thibodeau. The two-story house follows a simple design plan: "All horizontal" **CONTINUED.**

Power Grid

L.A.'s hottest architects turn a quiet quadrant of Venice streets into the insider's residential 'hood for top design talent

| By Sam Lubell | Photography by Melissa Valladares |

Sure, almost every noteworthy L.A. architect has designed and built a home in Venice Beach, from actress-friendly canal getaways to boardwalk minimanses. But where do those top architects actually live? Just head inland a few blocks to a nondescript, non-touristed pocket of tree-lined streets east of Abbot Kinney and north of Venice Boulevard: Welcome to ground zero for the city's highest concentration of A-list architects. On Milwood Avenue alone, two husband-and-wife design teams have recently built their own edgy, out-of-the box homes that keep easy company with the block's original, low-slung bungalows. Over on Nowita, another architect couple lives in a striking, open-plan house. Two blocks west on Palms Boulevard, Steven Ehrlich, the influential architect known for his rule-breaking residential and commercial structures, lives with his wife, writer Nancy Griffin. Just a stone's throw away from there, Frank Clementi and his wife, Julie Smith-Clementi, of Rios Clementi Hale Studios (Downtown's new Civic Park, Woodbury University Studio Building, notNeutral), live in a cube-like, modern bungalow on one of the area's coveted walk streets. And Michael Sant, whose striking mixed-use buildings dot Abbot Kinney, is yet another of the area's residents, committed to the "low-key, low-car, garden environment." Here's a snapshot of home-sweet-home for L.A. architects:



... CONTINUED planes [ceilings and floors] were to be expressed as wooden elements. All vertical planes [walls] were to be expressed as white elements," says Thibodeau. THE 'HOOD PERK "The walk streets are so intimate," says Vafai. "Walkers stop and look at our house; their children go on our swing, which is hanging from the sycamore tree. Then we'll walk to the corner and jump on our neighbor's giant trampoline, then walk another half block and go on the tire swing hanging from a 150-year-old magnolia tree."

THE ARCHITECT
Steven Ehrlich
Steven Ehrlich Architects

THE HOUSE Completed in 2005, Ehrlich designed his much-publicized house to be able to transform from "a totally open pavilion into a very

cozy house" via huge doors that completely disappear. THE 'HOOD PERK "We're part of the community, but far enough from the intensity of the boardwalk and Abbot Kinney. The area is quiet and unbelievably green. People have really beautiful gardens here."

THE ARCHITECTS
Jason Ruperto and Emmylou Vy
Emjae Design Shop

THE HOUSE Ruperto calls the A-frame structure clad in standing seam metal and cedar siding a new version of the classic beach bungalow: "It opens up on three sides so we can spend as much time as possible outdoors."

THE 'HOOD PERK "There's a freedom to design whatever you want here; the zoning laws are more relaxed," says Ruperto. "And then there's the fact that we're living and working in this community of architects, which I like. Robert, Carlos and I all went to SCI-Arc and we all know each other." ▣

Block Stars!

More design talent in Venice's under-the-radar area

Lawrence Scarpa and Angela Brooks

Pugh + Scarpa Architecture Husband-and-wife partners of this highly experimental design firm built their ultra-sustainable Solar Umbrella home in Venice.

Dennis Gibbens *Dennis Gibbens Architects* Gibbens lives above the mod Japanese shop Tortoise on Abbot Kinney, in a striking live-work structure of his own design.

David Hertz *Studio of Environmental Architecture* Hertz's high-concept, eco designs include the Floating House in Venice and the almost-completed 747 Wing House in Malibu.

Olivier Touraine and Deborah Richmond *Touraine-Richmond Architects* The husband-and-wife team are known for Venice's One Window House, a stylish study in low-impact, anti-McMansion dwellings.

Anthony Coscia *Coscia Day Architecture + Design* Coscia studied waves when designing his stunning Venice pad, where black and white, curved and angled elements meet.

