

# LA DESIGN

A Quarterly Publication of the American Society of Interior Designers - Los Angeles Chapter



WINTER 2007-08

In this Issue:

GREEN DESIGN

Working with Contractors  
Greystone

Our Students' Reports

Industry Partner Updates

UCLA's Timme Center

PULLMAN FURNITURE  
CREATES THE ULTIMATE IN  
IN-HOME THEATRE COMFORT

Page 5

## DAVID HERTZ: BUILDING STUDIO OF ENVIRONMENTAL ARCHITECTURE FROM A TACO STAND

The UCLA Extension ASID Chapter sponsored an exclusive tour and on-site mini seminar about sustainable architecture and design on September 15 with David Hertz, AIA, LEED AP, at **Studio of Environmental Architecture (S.E.A)**. As a surfer growing up in Southern California, David Hertz was profoundly affected by the life and death transformation of the ocean. Hertz's connection to it has contributed to his professional life as an "eco-preneur" designer and architect.



**UCLA Extension ASID Student Chapter Board Members - Sarah Weller, Special Projects; Sean Kim, President; Renata Harbison, Membership; Katherine Fern, Faculty Advisor, ASID; David Hertz, AIA; Nogah Brandt, Treasurer; Sally Ray, Vice President**

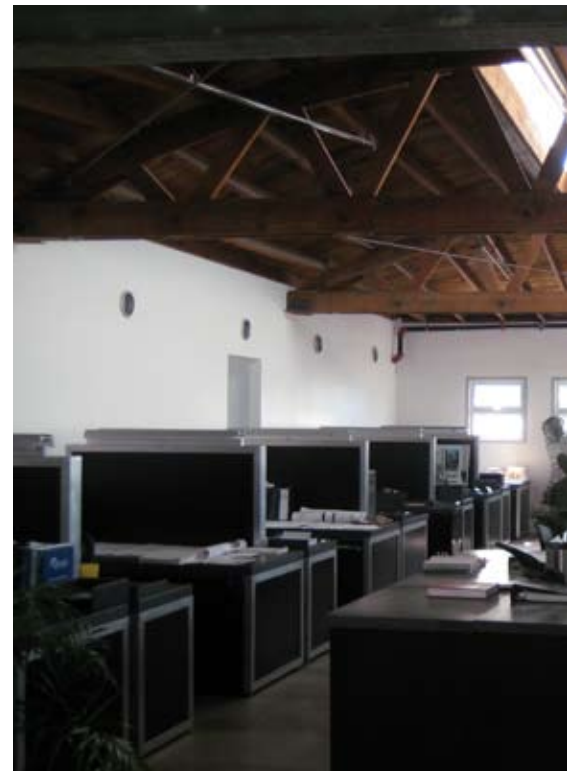
Hertz's S.E.A. is located in a former taco stand and market on the corner of 19th and Olympic in Santa Monica. The S.E.A workplace, LEED Registered Platinum, features new lighting systems, solar electric systems, natural ventilation strategies, permeable paving and a demonstration living roof. In order to leave the smallest carbon imprint Hertz decided to keep 90% of the existing shell but upgrade the windows. Working with plumbing wholesalers and the recyclers in the neighborhood, he put a new spin on adaptive reuse and set into motion 15 years of sustainable design practices.



**David Hertz conducts his Green Seminar on his "living roof".**

For Student Chapter Board Member Renata Harbison, the tour of S.E.A. was like watching a Cinderella story unfold - the pumpkin transforming into a beautiful coach and the mice being turned into handsome coachmen for the Prince's Ball. As a residential designer, Renata was inspired by Hertz's uses of sustainable materials throughout S.E.A. The experience became a jumping off point for research and application of materials in her own residential projects. "I now rethink every material that's been specified in a project. My current client approved eucalyptus wood for flooring. It is harder than oak and it has been sustainably harvested." Renata feels that in residential design, beauty, practicality and cost often take precedence over sustainability and long term cost savings. Renata's client was inspired by Hertz' use of recycled wine oak barrels for the shelving and the conference table. The story of the ancient art of wine making, turning hand harvested grapes into wine and using red wine as the patina of the wood table top is hard to resist. However, the idea of putting recycled denim as insulation was too radical for her clients. "In my client's neighborhood, everything must be approved by the community art jury, including photovoltaic solar panels. This makes it difficult and frustrating to specify sustainable materials. I believe it's our job to educate our clients, but we also have to educate contractors, homeowners' associations and city agencies. However, eucalyptus flooring is a big step for my clients."

At S.E.A., students learned first hand that good design is more than just looking good, it





must also be good for the environment. A recognized leader in environmentalism, Hertz is someone who not only talks the talk but also walks the walk. Before green was the new black, Hertz was speaking, designing, and fabricating sustainable design and architecture. As a member of the Santa Monica Environmental Task Force, winner of the City of Santa Monica Sustainable Leadership Award and Eco-Home Network's Sustainable Living Award, David Hertz continues to spread his message of sustainable environmental architecture through his designs, lectures and articles. Hertz is currently on the Academic Advisory Committee for the UCLA Extension Arc\_ID Program and teaches the Ecology of Design class.

What's next for S.E.A.? An extreme example of sustainable recycle and reuse of a 747 Boeing 747-200 aircraft. The **747 Wing House Project** is on a 55 acre property that was Tony Duquette's estate in Malibu and is to be constructed from 4.5 million components and pieces of this "big aluminum can." For more information about S.E.A., visit [www.studioea.com](http://www.studioea.com). ■



## EXAMPLES OF S.E.A. STRATEGIES FOR LEED PLATINUM CERTIFICATION

S.E.A. has achieved LEED Platinum by receiving 68 out of possible 69 points based on 6 required categories. Per LEED Guidelines, "The Leadership in Energy and Environmental Design (LEED) Green Building Rating System(tm) encourages and accelerates global adoption of sustainable green building and development practices through the creation and implementation of universally understood and accepted tools and performance criteria."

\* **Sustainable Sites** - achieved by the site being in an industrial part of Santa Monica, providing access to mass transit.

\* **Water Efficiency** - by using pervious concrete and gravel, rainwater goes directly into the ground into the aquifers rather than draining into the ocean.

\* **Energy and Atmosphere** - used photovol-

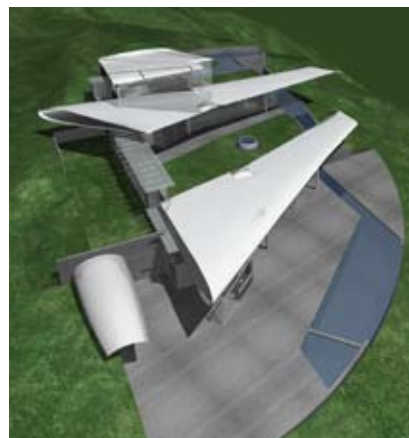
taic cells in the roof membrane that generate excess electricity that Hertz sells back to the city.

\* **Indoor Environmental Quality** - achieved by optimizing natural day light by creating a light well in the center of the studio letting in natural light.

\* **Material Resources** - met by using 100% recycled cotton denim garment scraps in the walls, providing superior sound and heat insulation. Interior finishes and furnishings are made from sustainable materials, including Sydncrete.

\* **Innovation and Design Process** - is present everywhere you turn including a battery operated grid to monitor energy use and a Dyson hand dryer that dries with a jet of cool air in seconds. In addition, motion occupancy sensor, daylight sensor and dimmable fluorescents contributed to additional energy savings.

The Wing House Project in Malibu



## UCLA EXTENSION ASID STUDENT CHAPTER LAUNCHES "GET GREEN, DESIGN GREEN" INITIATIVE

In an all out effort to promote sustainable design, the UCLA Extension ASID Student Chapter launched its "GET GREEN. DESIGN GREEN" Green Committee. Headed by Stephanie Fonda, Chair and Rose Malsed, Co-Chair the first order of business was to create a "Green Resource" library from scratch. The first major event will be sponsoring Lance Reed, the Executive Director of LEED to speak to the students beginning of 2008. Also, the new Green Resources page on the website will be unveiled soon. In addition, the highly anticipated "Green" t-shirt designed by Kimberly Holt to raise funds for the UCLA Extension ASID Student Chapter Green Committee is on sale. For more information, please visit [www.uclaextensionasid.com](http://www.uclaextensionasid.com). ■